

# The LandReport

*A Monthly Report for the  
American Landowner*



# Newsletter

JANUARY 2015 • LANDREPORT.COM



## PEACE RANCH SELLS FOR \$17.2 MILLION

**Colorado property originally listed for \$50 million.**



After languishing on the market for more than two years, a choice Fryingpan Valley property sold at a 65-percent discount. Known as the Peace Ranch, the 610-acre Rocky Mountain getaway includes five houses totaling 11,000 square feet, all of which are new or recently remodeled. Other amenities include an indoor riding arena, four stocked trout ponds, numerous trails, various corrals, and a snowmelt system. The ranch is located 15 minutes from Basalt and 45 minutes from Aspen. According to Tommy Latousek of listing brokerage Douglas Elliman Real Estate/Joshua & Co., the Peace is “a pretty amazing package. It’s one of the top sporting ranches in the West – and then you add its proximity to Aspen.” Latousek noted that the ranch is still eligible for a conservation easement. Read more about the sale of the Peace Ranch [HERE](#).

A Monthly Report for the American Landowner • LandReport.com

Email subscription inquiries to [datacenter@landreport.com](mailto:datacenter@landreport.com).  
Email editorial inquiries to [editor@landreport.com](mailto:editor@landreport.com).

The Land Report Newsletter is produced by the editors of  
The Land Report and is available in online and digital formats.

Subscription rates are \$49 for 12 issues (1 year), \$79 for  
24 issues (2 years), and \$99 for 36 issues (3 years).

THE LAND REPORT | PO BOX 941187 | PLANO | TEXAS | 75094



## INTERIOR



## PACIFIC

**ADMINISTRATION MOVES TO PROTECT ANWR.** The Department of the Interior is releasing a conservation plan that recommends additional protections for the 19-million acre Arctic National Wildlife Refuge. President Obama announced he will make a recommendation to Congress to designate core areas of the nation's largest wildlife refuge – including its coastal plain – as wilderness, the highest level of protection available to public lands. (Only Congress has the authority to designate Wilderness Areas and Wild and Scenic Rivers.) If Congress chooses to follow the president's recommendation, it would be the largest ever wilderness designation since the 1964 passage of the Wilderness Act. Read more [HERE](#).



## SOUTHWEST

## ENERGY

## Renewables

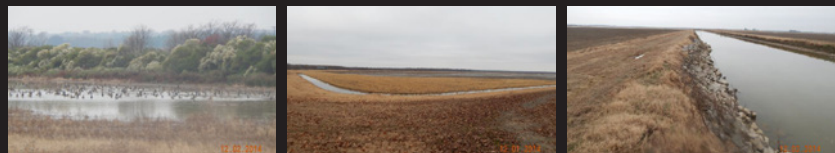
**NEW MEXICO LAND COMMISSIONER HALTS \$2 BILLION PROJECT.** Citing limited state input, New Mexico Land Commissioner Aubrey Dunn issued a 60-day right-of-entry suspension to SunZia, a \$2 billion transmission project designed to carry electricity generated in New Mexico and Arizona to markets across the West.

Dunn, who took over as land commissioner after defeating incumbent Ray Powell in the November general election, said he wants to ensure that all necessary agreements are in place to protect state lands and to ensure that public schools and other beneficiaries are getting fair consideration.

"Eighty-nine miles – nearly 30 percent – of the proposed transmission line will cross state trust land. The suspension will allow our office time to ensure all necessary agreements are in place to protect state trust land and ensure state beneficiaries are receiving fair consideration by SunZia," Dunn said. "The fact that the State Land Office and its representatives were not invited to Saturday's announcement by Secretary of the Interior Sally Jewell in Albuquerque is one example that the State Land Office and state trust land beneficiaries have not yet had a voice."

The State Land Office will hold two public meetings for stakeholders and county officials – March 10 in Deming and March 11 in Socorro – to discuss the SunZia project. Read more [HERE](#).

**ATTN: CONSERVATIONISTS, HUNTERS, FARMERS**  
**REAL ESTATE AUCTION:**  
**SELLING 15, 800+/- ACRES FOR M.E. BLACK FARMS**  
**FEB 24, 2015 10:00AM STUTTGART, AR**



**SELLING 15, 767+/- acers of Improved Cropland, Green Timber Reservoirs Woodlands, CRP and Reservoirs in Arkansas and Jefferson County. Property will sell to the highest bidder regardless of price.**

**SHOWN BY APPOINTMENT ONLY.**  
**Contact Michael Hinze at 501-352-4709 or**  
**michael@blackmonauctions.com**



A Monthly Report for the American Landowner • LandReport.com

Email subscription inquiries to [datacenter@landreport.com](mailto:datacenter@landreport.com).  
 Email editorial inquiries to [editor@landreport.com](mailto:editor@landreport.com).

The Land Report Newsletter is produced by the editors of  
 The Land Report and is available in online and digital formats.

Subscription rates are \$49 for 12 issues (1 year), \$79 for  
 24 issues (2 years), and \$99 for 36 issues (3 years).

THE LAND REPORT | PO BOX 941187 | PLANO | TEXAS | 75094





## COTTONWOOD SPRINGS RANCH

Durango, Colorado



Multi-purpose, 525-acre ranch borders BLM and includes a luxury home, guest home, horse & cattle facilities, water & mineral rights, creek, ponds and expansive meadows. Excellent hunting.

[www.CottonwoodSpringsDurango.com](http://www.CottonwoodSpringsDurango.com)



Elevation  
Real Estate  
Company



MIDWEST

USF&W

## Invasive Species

### ASIAN CARP NEARING LAKE MICHIGAN.

U.S. Fish and Wildlife Service reports that Asian carp are knocking on the door of the Great Lakes. Sampling data, collected in

October, show the presence of bighead or silver carp DNA throughout the Chicago Area Waterway System less than a city block from Lake Michigan. In the face of this threat, last winter the U.S. Army Corps of Engineers released its Great Lakes-Mississippi River Interbasin Study with no clear recommendation to prevent Asian carp and other aquatic invasive species from moving between the Great Lakes and Mississippi River. The report identified 13 invasive species at significant risk of moving between the waterways. Despite this finding, agencies and elected officials have yet to commit to this solution. Read more [HERE](#).

## BECAUSE THERE IS NO 'OFF SEASON'

### TOOLS TO TRANSFORM YOUR LAND



A Monthly Report for the American Landowner • LandReport.com

Email subscription inquiries to [datacenter@landreport.com](mailto:datacenter@landreport.com).  
Email editorial inquiries to [editor@landreport.com](mailto:editor@landreport.com).

The Land Report Newsletter is produced by the editors of  
The Land Report and is available in online and digital formats.

Subscription rates are \$49 for 12 issues (1 year), \$79 for  
24 issues (2 years), and \$99 for 36 issues (3 years).

THE LAND REPORT | PO BOX 941187 | PLANO | TEXAS | 75094



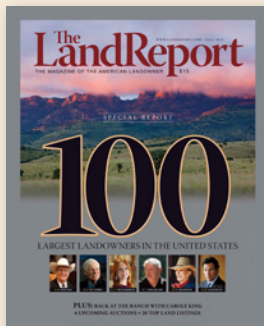
## BATES LAND CONSORTIUM, INC.

~BLC~

C. Patrick Bates • President  
Bates Land Consortium, Inc.  
800-819-9920 Toll Free  
cpb@bateslandco.com  
www.bateslandco.com

SUBSCRIBE

GET THE MAGAZINE  
OF THE AMERICAN  
LANDOWNER  
FOUR TIMES A YEAR



FOLLOW US:



WEST

LISTING

## Colorado Recreational Ranch

### BEAR WALLOW RANCH LOWERS PRICE.

The 2,600-acre Western Colorado landmark, which was originally listed for \$37 million, has been lowered to \$29.9 million. Conveniently

situated off of Interstate 70 west of Glenwood Springs and just 15 minutes to Rifle/Garfield County Airport, this end-of-the-road tract features exclusive Forest Service access as well as BLM and Forest Service grazing leases. Improvements include a five-bedroom, three-and-one-half bath home with guest house, a lodge, an equipment barn, hay sheds, cattle handling facilities, senior water rights, numerous ponds, direct private access to public land, abundant wildlife, and excellent hunting. Rue Balcomb at Mason & Morse Ranch Company has the listing. Read more [HERE](#).

**212 ACRES IN FORT KLAMATH, OREGON.**  
**Spring fed Wood River habitat for native**  
**Redband trout in pristine valley at the**  
**base of Crater Lake National Park.**

Linda Long, Principal Broker/Owner  
Crater Lake Realty, Inc.  
PO Box 489/33550 Hwy 97N  
Chiloquin, OR 97624  
541-891-5562  
Linda@CraterLakeRealtyInc.com

Crater Lake Realty, Inc.



A Monthly Report for the American Landowner • LandReport.com

Email subscription inquiries to [datacenter@landreport.com](mailto:datacenter@landreport.com).  
Email editorial inquiries to [editor@landreport.com](mailto:editor@landreport.com).

The Land Report Newsletter is produced by the editors of  
The Land Report and is available in online and digital formats.

Subscription rates are \$49 for 12 issues (1 year), \$79 for  
24 issues (2 years), and \$99 for 36 issues (3 years).

THE LAND REPORT | PO BOX 941187 | PLANO | TEXAS | 75094